

BBB[®] Serving North Alabama
PO Box 1043
Huntsville, AL 35807
256-533-1640 or 1-800-239-1642 (within AL)
www.northalabama.bbb.org

BBB Reliability Report for

CASA Of Madison County

A BBB Accredited Charity since 02/06/2015.



This BBB Accredited Charity meets all 20 Standards for Charity Accountability and is a Seal Holder. BBB issues Charity Reports on all organizations, whether or not they are BBB accredited. If an organization is a BBB Accredited Charity, it is stated in this report.

Name: CASA Of Madison County

Phone: (256) 533-7775

Fax: (256) 533-7544

Address: 701 Andrew Jackson Way NE

Huntsville, AL 35801-3504

Website: www.casamadisoncty.org

<https://www.facebook.com/CASAMadisonCty>

<https://www.youtube.com/user/CASAMadisonCty>

<https://twitter.com/CASAMadisonCty>

Report Creation Date: December 5, 2019

Report Expiration Date: December 5, 2020

Original Business Start
Date: January 1979

Principal: Ms. Ann N. Anderson, Executive Director

Customer Contact: Ms. Ann N. Anderson, Executive Director - (256) 533-7775 or [send email](#)

Email Address: [Send email to CASA Of Madison County](#)

Entity: Charity

Incorporated: January 1982, AL

Employees: 7 Full Time. 2 Part Time.

Type of Business: Charity - Local

BBB Accreditation: Yes

Additional DBA Names

Care Assurance System For The Aging & Homebound Of Madison County

CASA

Stated Purpose

The purpose of CASA is to provide needed services to aging/homebound individuals that allow them to remain at home and Age in Place.

To provide needed services to aging/homebound individuals (of all ages) that age in place. CASA direct services are provided by volunteers, at no cost to the clients.

Evaluation Conclusions

This organization has been evaluated according to the 20 BBB Standards for Charity Accountability. This organization meets all those Standards and is a BBB Accredited Charity.

BBB Charity Seal Participation

Charities that meet the Standards for Charity Accountability are eligible to participate in BBB Wise Giving Alliance Charity Seal program. The seal, which can be displayed on the charity's web site and in printed materials, helps inform the public that the charity meets these standards. This organization participates in this program.

Programs

CASA serves Madison County by providing the following services to the aging and homebound:

Installs wheelchair ramps

Cultivates the CASA community garden

Delivers fresh CASA garden vegetables

Installs grab bars and handrails

Safety Net Health Care Services - home safety assessments and health education

TEMP\$ - Taking Energy Measures Personally = \$avings - CASA's weatherization services

Information and referral

Weather assistance - air conditioners and fans for clients

Transportation to medical appointments

Friendly visiting and telephone reassurance

Durable medical equipment for clients

Total Program Expenses: \$488,976

Governance

CASA's Board of Directors meets monthly.

Chief Executive Officer: Ann N. Anderson

Highest Paid Executive: CEO

Chair of the Board: Stephanie Hendon

Board Size: 19

Paid Staff Size: 7 Full Time. 2 Part Time.

Fund Raising

CASA does not employ any outside fund raising firms.

United Way, print advertisements, grant proposals, invitations to special events - Night in the Garden and the No Place Like Home 5K Run

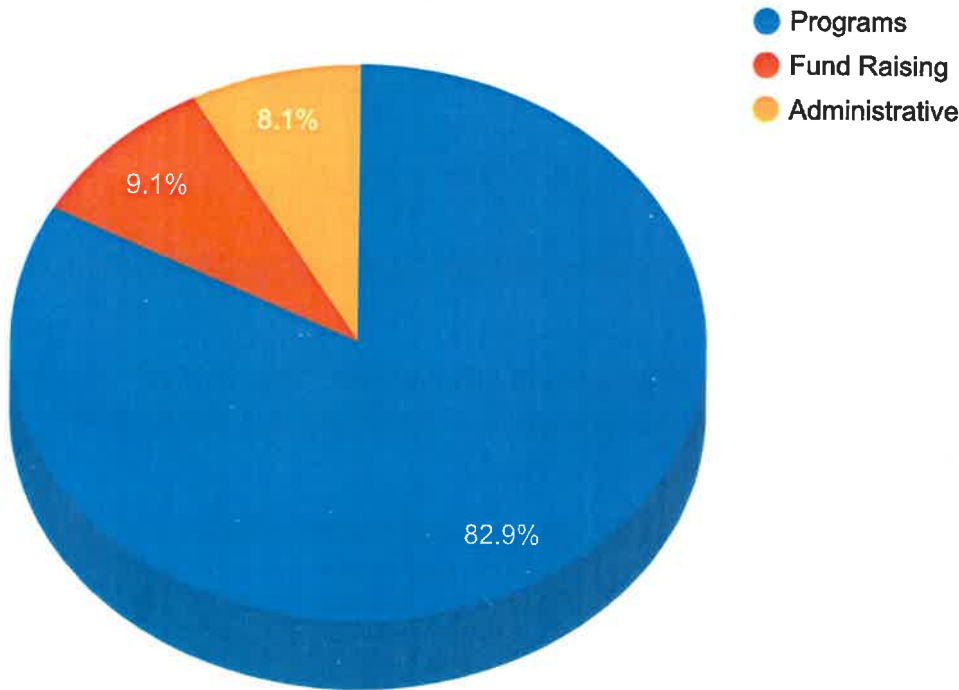
Tax Status

This organization is tax-exempt under section 501(c)(3) of the Internal Revenue Code. It is eligible to receive contributions deductible as charitable donations for federal income tax purposes.

Financial

According to CASA Of Madison County's Audited Financials for the year ended June 30, 2019:

Use of Funds as a % of Total Expenses



Income

Contributions	\$91,578
Grants	\$190,301
United Way and CFC	\$138,135
Fundraising	\$173,508
Interest & Investments	\$6,414
Total Income:	\$599,936

Expenses

Programs:	\$488,976	<u>% of total Expenses</u>	<u>% of total Income</u>
		82.87%	81.50%

Fund Raising:	\$53,538	9.07%	8.92%
Administrative:	\$47,525	8.05%	7.92%
Other:	\$0	0.00%	0.00%
Total Expenses:	\$590,039		

Excess of Income over Expenses	\$9,897
Beginning Net Assets	\$228,026
Ending Net Assets:	\$237,923
Total Assets	\$262,512
Total Liabilities	\$24,589

* Excess for the year indicates the portion of income remaining after expenses.

Industry Tips

CHARITABLE SOLICITATIONS

In an effort to assist you in making a responsible decision, the BBB suggests you follow these guidelines:

1. Use your head as well as your heart. Beware of telephone solicitations. The ultimate telephone solicitation scam can result when callers secure your pledge for a donation to a non-existent charity.
2. If you are tempted to respond to a telephone appeal, request that literature be sent to you along with the organizations latest financial statement BEFORE you make a contribution. This information will allow you to determine how much of your donation actually goes to the cause, how much to fund raising and administrative costs.
3. Beware of "runners" who will be right over to pick up your check.
4. Never make cash donations, always pay by check with the endorsement made out to the charity, not the person collecting.

Bona fide solicitors will welcome the requests, and gladly furnish the information, bogus solicitors will not be able to provide this information or will attempt to talk themselves out of an uncomfortable situation and go on to a less "educated giver".

ID: 4000462

Report as of January 23, 2020 21:24

Copyright© 2020 Better Business Bureau

An organization may change its practices at any time without notice. Donors must decide for themselves the significance of any variation from BBB Standards, taking into account the relative importance of the practice in question in the context of the organization's total performance.

This report reflects the results of an evaluation of informational materials provided voluntarily by the organization. The report is not intended to recommend or deprecate, and is furnished solely to assist you in exercising your own judgement.

This report is not to be used for fund raising or promotional purposes.